



# METALICON®

Dynamic. Expressive. Enduring.



Ergonomic  
accessories





## Discover Metalicon®

A growing range of ergonomic workspace accessories intelligently designed by our team of experts

**The Metalicon® product range was launched back in 2012 in response to a growing need for robust but refined accessories to support the office furniture market. We now supply Metalicon® products to customers worldwide.**

The office environment has changed dramatically over the last decade with an increased focus on wellbeing, in particular employers pay high attention to workplace ergonomics and the relationship to productivity.

We launched our first pole-mounted monitor arm in 2013 to help office workers avoid the risks associated with display screen equipment and save valuable desk space. Our Kardo range has proved very popular and now includes arms for single, twin and quad screen setups.

Metalicon® has since added more monitor arms, strong and flexible cable management and compact power modules to our growing product portfolio. We look forward to announcing further intelligently designed product developments very soon.

Partner with us for dealer support and trade discounts

**Join our global dealer network**

Arrow Group sell accessories exclusively to the trade so we never compete with our dealers. Your business is our business, so we strive to provide you with sales leads and extensive support. Some of our sales and support staff come from a dealer background, so we can empathise with your challenges.

We also hold large stocks of our entire Metalicon® range in our central warehouse for pan-European delivery.



Levo

Dynamic monitor arm with laptop holder

Levo offers the very latest in monitor arm design with a unique ratchet and clutch mechanism engineered to hold large screens securely, whilst being easy and smooth to adjust.

Simple to install, Levo is perfect for single or dual screens in hot-desking workspace environments where separate users require different screen heights.

Quick-release 75mm/100mm VESA mount with hand-turn screws

Innovative ratchet tilt adjustment with safety clutch mechanism using easy-to-access lever

Smooth gas lift for easy height adjustment

One-touch easy position adjustment is ideal for hotdesk workspaces

EASY TO INSTALL  
All tools included

Integral high capacity cable management

Optional 180° rotation stop

Clamp is tightened from above desk for easy installation  
Through-desk clamp option included

Flexible base design for through-desk cable management

Twin rail for dual screens/monitors

Quick-release mount

Curved twin rail attachment converts Levo arm to dual/twin screens

Optional handle aids rail tilt adjustment

Easy slide adjustment to position screens

Quick-release twin rail and VESA mounts make installation easy

High capacity integrated cable management easily holds 4 cables

Tension adjustment indicator helps reduce project installation times

All adjustment tools included, stored neatly inside the base

Both desk-edge clamp and through-desk clamp included in the box

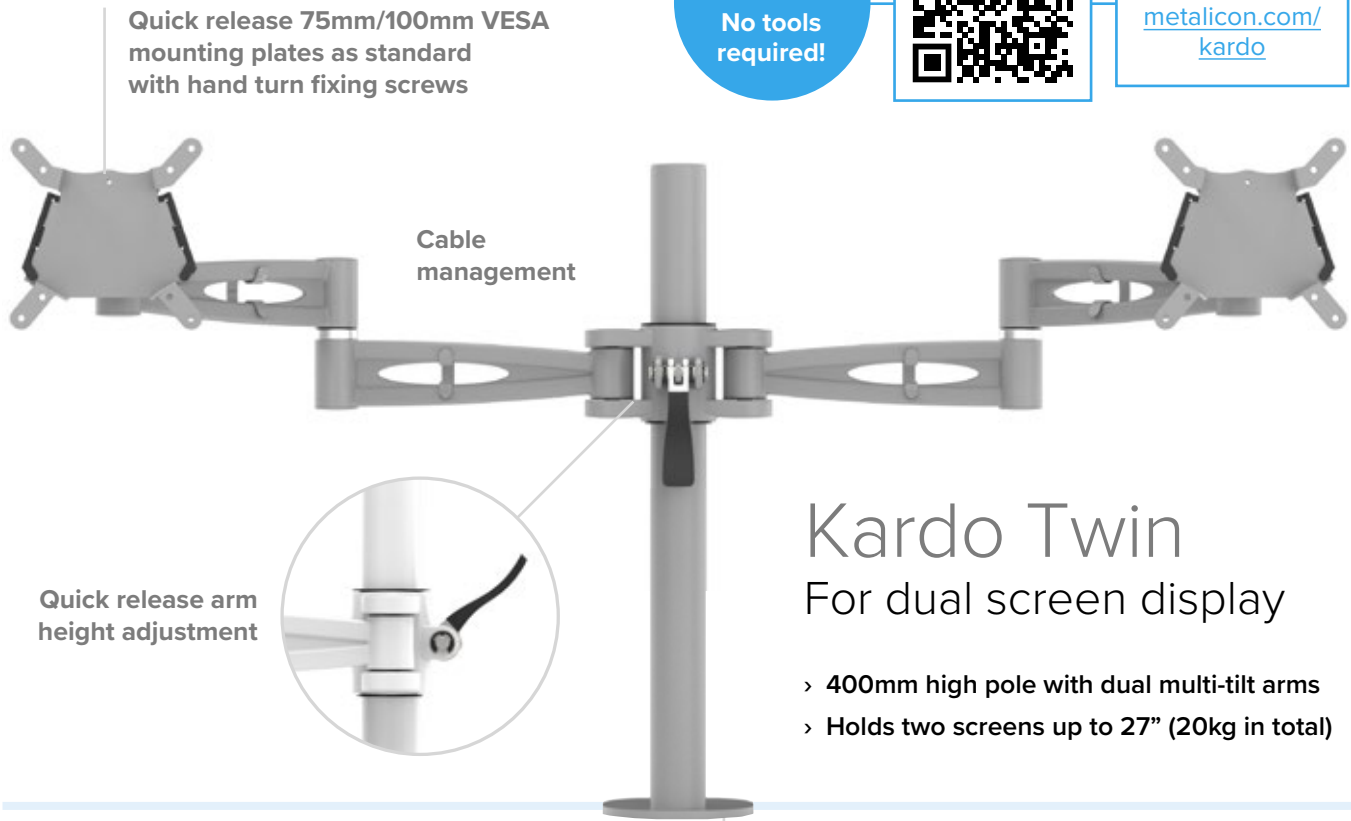
Convert to laptop holder with universal VESA attachment

MONITOR ARM	MAX. CAPACITY	ARM FINISH
Gas lift monitor arm for single screen/monitor	10kg	Black
Twin rail to convert single arm to dual screens/monitors	2 x 4kg	White
Universal laptop holder attachment	10kg	Grey



# Kardo

Pole-mounted monitor arms



## Kardo Twin

For dual screen display

- › 400mm high pole with dual multi-tilt arms
- › Holds two screens up to 27" (20kg in total)

**FIRA** Certified to: BS EN ISO 9241 Workplace Ergonomics  
PP 045 Safety and Durability

Includes pre-assembled clamp  
plus through-desk fixing option



Integrated cable management keeps your workspace clear



Single person install - quick release removable VESA mounting plates slide effortlessly onto Kardo arm with fixing clips to hold screen in place



Hand-turn desk edge clamp and through-desk fixing available

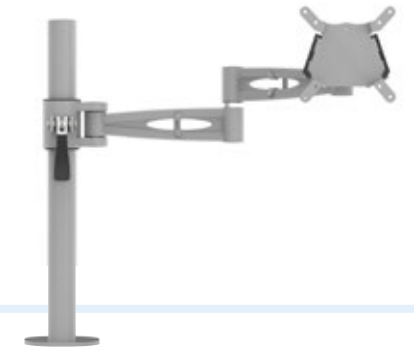
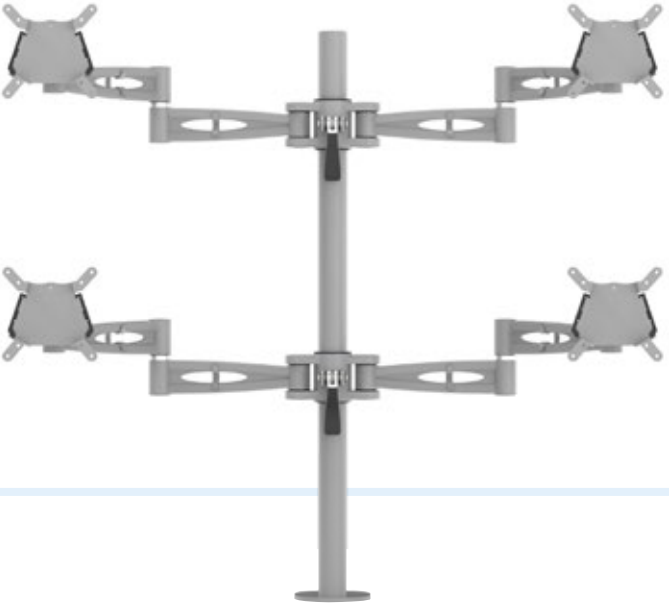


Brighten your workspace with an integrated flower holder in the pole

# Kardo Single

For single screen display

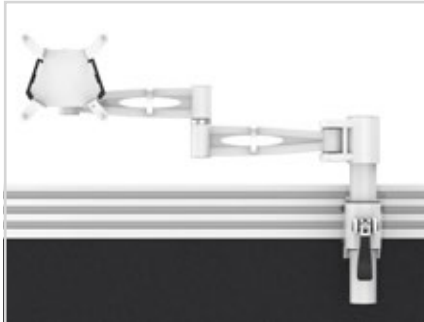
- › 400mm high pole with single multi-tilt arm
- › Holds one screen (up to 12.5kg)
- › Inverted single arm available to convert existing single arm to twin/dual



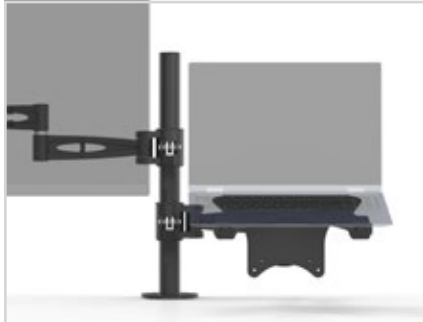
## Kardo Quad

For four screen display

- › 700mm high pole with quad multi-tilt arms
- › Holds four screens up to 27" (32kg in total)



Tool rail mounted arm option for single screen display



Quick release universal laptop attachment option



Low profile mini clamp option (requires hex/allen key)

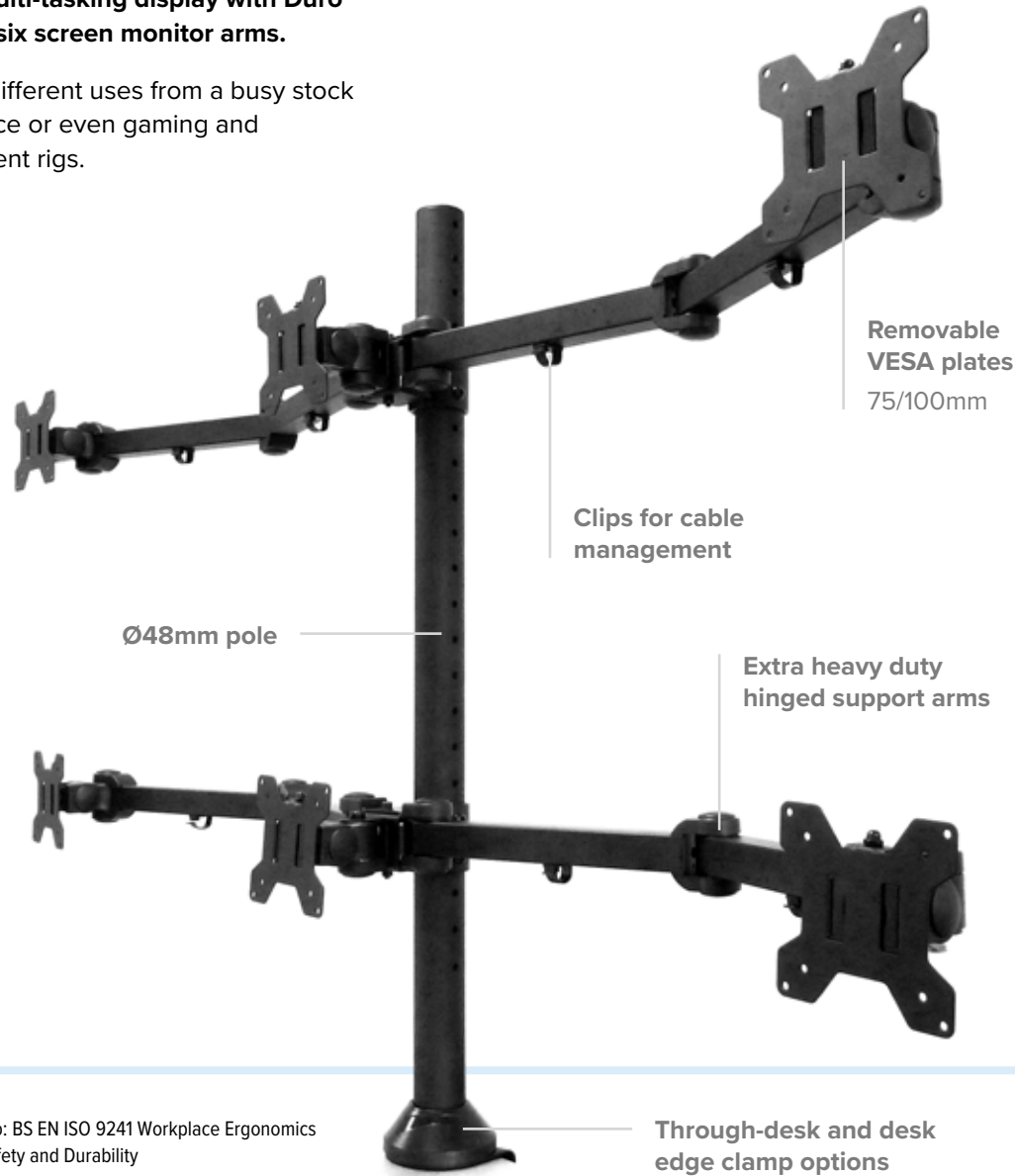
MONITOR ARMS	MAX. CAPACITY	FINISH
Pole-mounted monitor arm for single screen	12.5kg	Black
Pole-mounted monitor arm for twin screens	2 x 10kg	White
Pole-mounted monitor arm for four screens	4 x 8kg	Grey
Tool rail mounted monitor arm for single screen	6kg	
Inverted single arm only - to convert single to twin	12.5kg	
Universal laptop holder attachment	10kg	

# Duro

## Heavy duty monitor arms

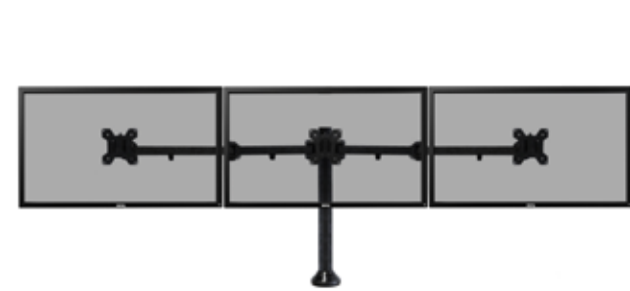
Create the ultimate multi-tasking display with Duro heavy duty three and six screen monitor arms.

Perfect for a range of different uses from a busy stock exchange to surveillance or even gaming and multimedia entertainment rigs.

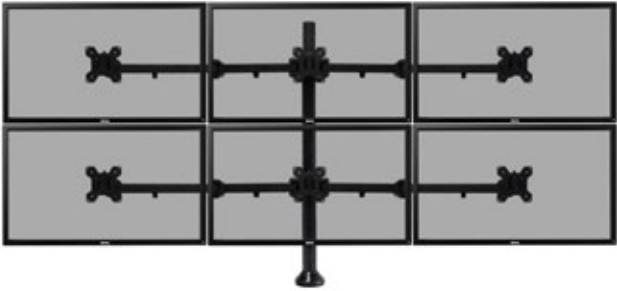


Supports up to six 10kg monitors up to 24" in screen size\*

**FIRA** Certified to: BS EN ISO 9241 Workplace Ergonomics PP 045 Safety and Durability



Triple screen heavy duty monitor arm



Six screen heavy duty monitor arm

MONITOR ARMS	MAX. CAPACITY	FINISH
Triple screen heavy duty pole-mounted monitor arm	3 x 10kg	Black
Six screen heavy duty pole-mounted monitor arm	6 x 10kg	

\* Maximum screen width 600mm



## Visit our showroom

Get hands on with Metalicon® accessories

Try out all the products in this guide at our product showroom in Clerkenwell, London. We can host your customers too.

**47 Gee Street, Clerkenwell  
London EC1V 3RS**

Contact our showroom manager Matt Fleck to arrange your visit: +44 (0)20 3620 5151

Check out our virtual tour:  
[arrowgroup.com/showroom](https://arrowgroup.com/showroom)



You'll also discover products from the Formetiq® furniture range including standing desks, task chairs, meeting chairs and mobile storage. Our ergonomic Metalicon® accessories have been designed to work seamlessly with and colour match to Formetiq® furniture.

Arrow Group are partner distributors for Narbutas furniture and you'll see many of their ranges in our showroom including bench desks with acoustic screens, breakout meeting tables and soft seating.

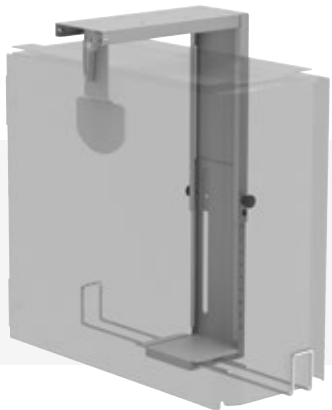


# CPU Holders

for most form factors

T1

- › Designed for mid tower CPUs, adjustable for other sizes
- › Spring-loaded pin to adjust height easily
- › Security bars prevent CPU falling from holder
- › Mount to desktop or side panel
- › Optional slide & turn kit and desk beam clearance kit



T3

- › Designed for mini or mid tower CPUs, adjustable for other sizes
- › Easy adjustment with straps and side release buckles
- › Includes desk beam clearance kit
- › Optional horizontal mounting kit
- › Available in black only



T2

- › Designed for mini tower or SFF CPUs, adjustable for other sizes
- › Spring-loaded pin to adjust height easily
- › Security bars prevent CPU falling from holder
- › Mount to desktop or side panel
- › Optional slide & turn kit and desk beam clearance kit



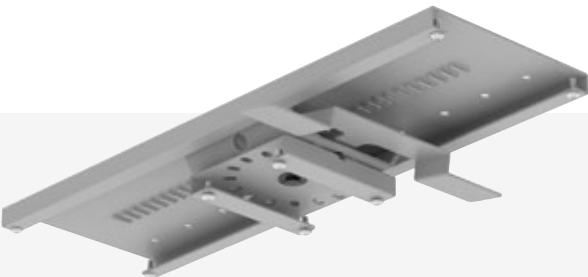
S1

- › Designed for mini CPUs or thin clients
- › Ideal for Apple Mac Mini®
- › Adjustable security strap with side release buckle
- › Mount to desktop, side panel, VESA or monitor arm pole
- › Compatible with Metalicon® Kardo and Levo monitor arms



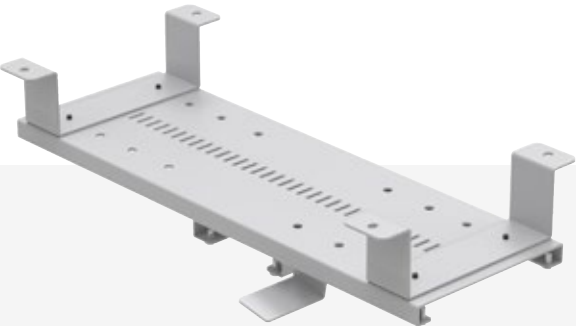
## Slide & turn kit

- › Allows easy access and repositioning of CPU
- › Locks in position to prevent unwanted movement
- › Includes desk beam clearance kit (CHSP)
- › Compatible with T1 & T2 CPU holders



## Desk beam clearance kit

- › Enables fixing to desktop around horizontal beams
- › Compatible with T1 & T2 CPU holders
- › Compatible with slide & turn kit



Mounted to Kardo pole



Mounted to underside of desktop



Mounted to Levo VESA



Certified to severe structural standards  
Test Method PP 050: 2009 - Severe Use

CPU	FIXING / MOUNT	WIDTH CAPACITY	DEPTH CAPACITY	HEIGHT CAPACITY	FINISH
T1	Desktop / side panel	35 - 252	140 - 490	333 - 564	Black / White / Grey
T2	Desktop / side panel	35 - 110	140 - 300	213 - 360	Black / White / Grey
T3	Desktop	Max. strap circ. 1190	N/A	Min. 140	Black
S1	Desktop / side panel / VESA / pole	Max. strap circ. 700	25 - 63	N/A	Black / White / Grey

Boost

Desktop power + charge

Beautiful, stylish and incredibly compact, Boost desktop modules provide power exactly where you need it while using minimal space on your desk.

Boost is designed to appear subtle and unobtrusive at the rear of the desktop, available in white or black.

5 YEAR GUARANTEE

Individually fused power sockets

Neon master switch  
Type G (UK) modules

Type G (UK or E (French) sockets

Easy-install low profile fixing clamps included  
Easily secure the Boost module to the desktop with no tools required



USB-A and USB-C smart charge

RJ45 (Cat6) data transfer

Extremely high quality construction with aluminium casing



POWER	USB-A	USB-C	RJ45 DATA
1 x Type G + master switch	1	1	
2 x Type G + master switch			
2 x Type G + master switch	1	1	
2 x Type E	1	1	
2 x Type G + master switch			2
2 x Type G + master switch	1	1	2
2 x Type E	1	1	2
4 x Type G + master switch	1	1	

FINISH
Black
White



Fully tested and certified to BS 5733 & BS 1363-2, CE marked  
Meets BS 6396 requirements

Powerlink

Under-desk power

These simple but robust power modules can be installed in cable trays or fixed to the underside of the desktop using the brackets or hook and loop pads provided.

With high quality aluminium alloy casing, solid construction and sleek appearance, Powerlink offers incredible value for money.

Powerlink modules can be linked to other under-desk or desktop power modules, including Boost and Solo Plus, using connector cables with a maximum of six power sockets in one series. Powerlink comes with a champagne alloy case and black plastic insert.

Type G (UK) or E (French) sockets

Easy to connect with Boost desktop modules  
Mains to GST 3-pole female power cables and GST 3-pole male to female connector cables are available in various lengths (1-10m)



Powerlink comes with optional metal brackets and hook & loop fixings for fixing to desktop

5 YEAR GUARANTEE



POWER
2 x Type G
2 x Type G + master switch
2 x Type E
3 x Type G
3 x Type E
4 x Type G
4 x Type G + master switch
4 x Type E
6 x Type G
6 x Type E

FINISH
Alloy case with black insert



Fully tested and certified to BS 5733 & BS 1363-2, CE marked  
Meets BS 6396 requirements



# Solo

Smart Charge power + charge

Simple. Convenient. Incredible value.

With a single power socket, USB-A Smart Charge socket and 2.5m hardwired mains power cable, Solo fits conveniently in a standard Ø80mm port hole and provides the perfect accessory to your desk. It is an ideal retrofit power supply for desks with a round cable port hole cutout already in place.



2.5m hardwired  
mains power cable

5 YEAR GUARANTEE

FINISH	POWER	USB-A
Black	1 x Type G	1
White	1 x Type E	1

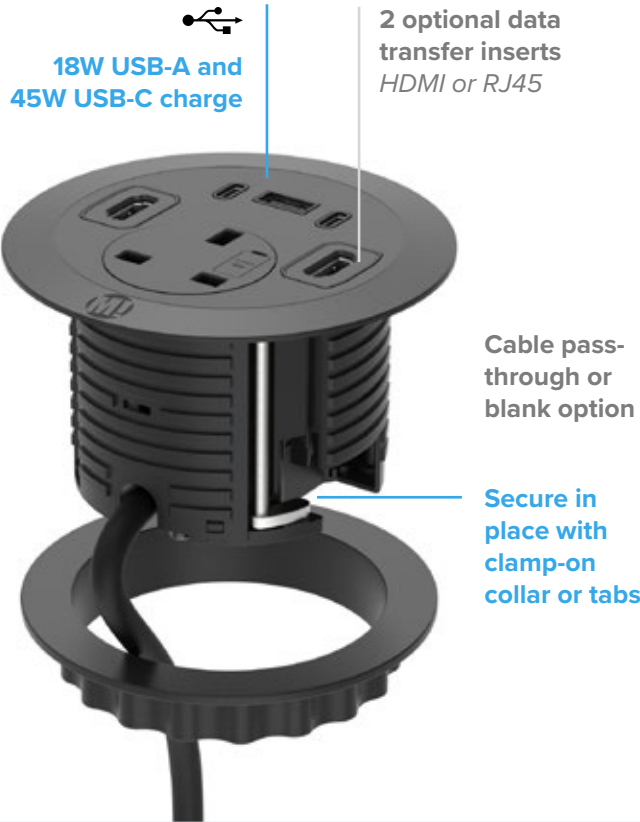
Fully tested and certified to BS 5733 & BS 1363-2, CE marked  
Plug tested to BS 1363-1, meets BS 6396 requirements

# Solo Plus

Customisable power + charge

Solo Plus offers the same compact simplicity of Solo with a single UK power socket and 18W USB-A smart charge socket plus the addition of 2 x 45W USB-C smart charge sockets - all in one Ø80mm module!

Choose from HDMI or Cat6 RJ45 data transfer inserts for both sides of the module or alternatively leave them blank or empty for use as cable pass-throughs.



5 YEAR GUARANTEE

FINISH	GST 3-POLE POWER CABLE
Black	1-10m
White	

Fully tested and certified to BS 5733 & BS 1363-2, CE & UKCA marked  
Meets BS 6396 requirements

POWER	USB-A	USB-C	RJ45 DATA	HDMI
2 x Type G	1	1	2	
2 x Type G	1	1		2
2 x Type G	1	1	1	1
2 x Type G	1	1	1	
2 x Type G	1	1		1



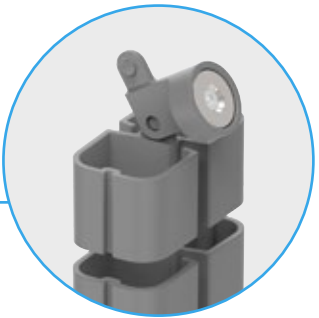
# Linx

Magnetic cable management spine

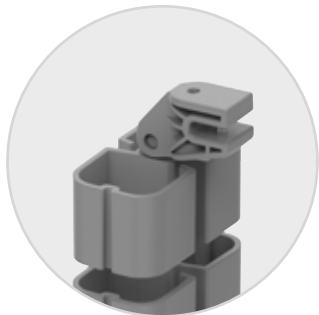
Designed with strength, flexibility and ease of installation in mind, Linx offers the latest developments in superior cable management.

The unique ‘twist not pull’ linking system ensures the vertebrae will never pull apart under tension, but will detach very easily when twisted sideways. This ensures that Linx never comes apart while in use, but remains incredibly easy to extend and manipulate when needed.

The new Linx Limpet makes installation quick and easy, fixing the spine to cable trays or desk frame with a magnet. The spine can be easily relocated if required.



**Limpet magnetic fixing**  
Mount Linx anywhere on cable tray or desk frame



**Alternative multipurpose fixing clamp**  
Mount to cable tray, wire basket or desktop

**Unique linking system**  
Click-together vertebrae make Linx incredibly easy to shorten or lengthen and insert power and data cables

**Dual cable compartments**  
Segregated power and data cables (30mm x 25mm)

**Large stable base**  
Weighted base with dual cable exits



SPINE	LENGTH
20 vertebrae + weighted base	800
33 vertebrae + weighted base	1300
33 vertebrae, no base (for tray to tray use)	1280

FINISH
Black
White
Grey





# Cable Trays and baskets

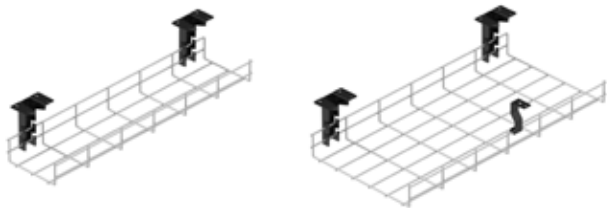
Untidy power and data cables are unsightly, make cleaning difficult and can pose a safety risk. Use of a cable tray or basket underneath the desk helps to keep cables neat and tidy and the workspace clear.

Our range of simple but strong steel cable trays and baskets is designed to suit various desk sizes and arrangements.

TRAY FINISH
Black
White
Silver
Anthracite

## Cable baskets

Galvanised steel finish only



WIDTH	DEPTH	HEIGHT	DESK WIDTH
600	150	50	800 / 1000
1000	150	50	1200 / 1400
1400	150	50	1600 / 1800
600	300	50	800 / 1000
1000	300	50	1200 / 1400
1400	300	50	1600 / 1800

## Desktop fix

Fixed to underside of desktop



WIDTH	DEPTH	HEIGHT	DESK WIDTH
850	100	125	1200
1050	100	125	1400
1250	100	125	1600
1450	100	125	1800

## Modesty panel fix

Fixed to desk modesty panel



WIDTH	DEPTH	HEIGHT	DESK WIDTH
850	100	50	1200
1050	100	50	1400
1250	100	50	1600
1450	100	50	1800

## Shared / bench desking

Fixed to underside of desktops



WIDTH	DEPTH	HEIGHT	DESK WIDTH
1100	110	130	1200 / 1400
1400	110	130	1600 / 1800
1100	430	130	1200 / 1400
1400	430	130	1600 / 1800

## Sliding desktop bench desking

Hooked onto bench desk frame



WIDTH	DEPTH	HEIGHT	DESK WIDTH
1100	430	130	1400
1400	430	130	1600

*Designed to work with the Narbutas Nova sliding desk system*



# Ocean Friendly Packaging®

Looking after our planet for future generations

Waste plastic is creating a global pollution problem, especially in our oceans. Nobody knows exactly how much, but recent estimates from respected scientific journals indicate some 8 million tonnes of plastic enter our oceans every year!

Since 2018 we have been focused on eliminating plastic from our product packaging. The majority of our product packaging is already made using recycled paper-based materials which can also be recycled again and our aim is to have all Metalicon® branded packaging completely plastic free by 2025.



Look out for our Ocean Friendly logo on Metalicon® product packaging. This indicates the packaging for this product is already completely plastic free! Thank you for supporting us in tackling this important issue.





Compass House, Waveney Drive, Lowestoft, NR33 0TP  
+44 (0)1502 533 433 | [sales@arrowgroup.com](mailto:sales@arrowgroup.com)  
[arrowgroup.com](http://arrowgroup.com)