



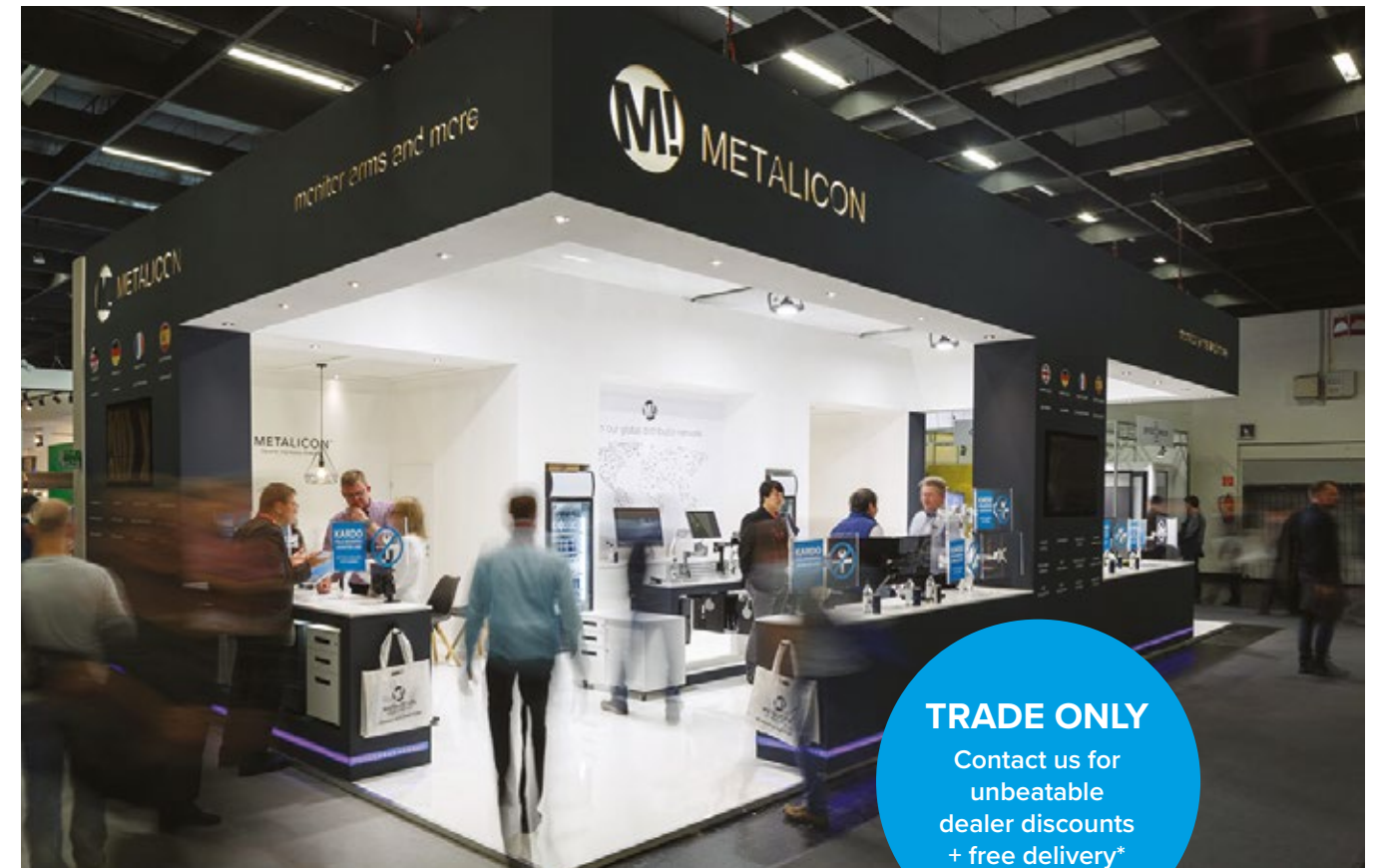
METALICON[®]

Dynamic. Expressive. Enduring.



Ergonomic
accessories





Discover Metalicon®

A growing range of ergonomic workspace accessories intelligently designed by our team of experts

The Metalicon® product range was launched back in 2012 in response to a growing need for robust but refined accessories to support the office furniture market. We now supply Metalicon® products to customers worldwide.

The office environment has changed dramatically over the last decade with an increased focus on wellbeing, in particular employers pay high attention to workplace ergonomics and the relationship to productivity.

We launched our first pole-mounted monitor arm in 2013 to help office workers avoid the risks associated with display screen equipment and save valuable desk space. Our Kardo range has proved very popular and now includes arms for single, twin and quad screen setups.

Metalicon® has since added more monitor arms, strong and flexible cable management and compact power modules to our growing product portfolio. We look forward to announcing further intelligently designed product developments very soon.

Partner with us for dealer support and trade discounts

Join our global dealer network

Arrow Group sell accessories exclusively to the trade so we never compete with our dealers. Your business is our business, so we strive to provide you with sales leads and extensive support. Some of our sales and support staff come from a dealer background, so we can empathise with your challenges.

We also hold large stocks of our entire Metalicon® range in our central warehouse for pan-European delivery.



Levo

Dynamic monitor arm with laptop holder



Watch the video
metalicon.com/levo

Our updated Levo monitor arm remains effortless to adjust whilst the unique connector pin system makes it easy to reconfigure for dual screens.

Simple to install, Levo is perfect for single or dual screens in agile working environments or with large touch screens at exhibitions or in reception areas.

Quick-release
75mm/100mm
VESA mount with
hand-turn screws

Innovative connector pin
system for converting
single arm to dual

Smooth gas lift for easy
height adjustment

EASY TO
INSTALL
All tools
included

Integral high
capacity cable
management

Optional 180° rotation stop

One-touch
easy position
adjustment is
ideal for hotdesk
workspaces

Clamp is tightened
from above desk for
easy installation
Through-desk clamp
option included

Through-desk
clamp option
available

Twin rail for dual screens/monitors



Curved
twin rail
attachment
converts Levo
arm to dual/
twin screens

Optional handle aids
rail tilt adjustment

Easy slide
adjustment to
position screens



Innovative connector pin system
makes Levo easy to reconfigure



High capacity integrated cable
management easily holds 4 cables



Tension adjustment indicator helps
reduce project installation times



All adjustment tools included,
stored neatly inside the base



Optional mini CPU holder available

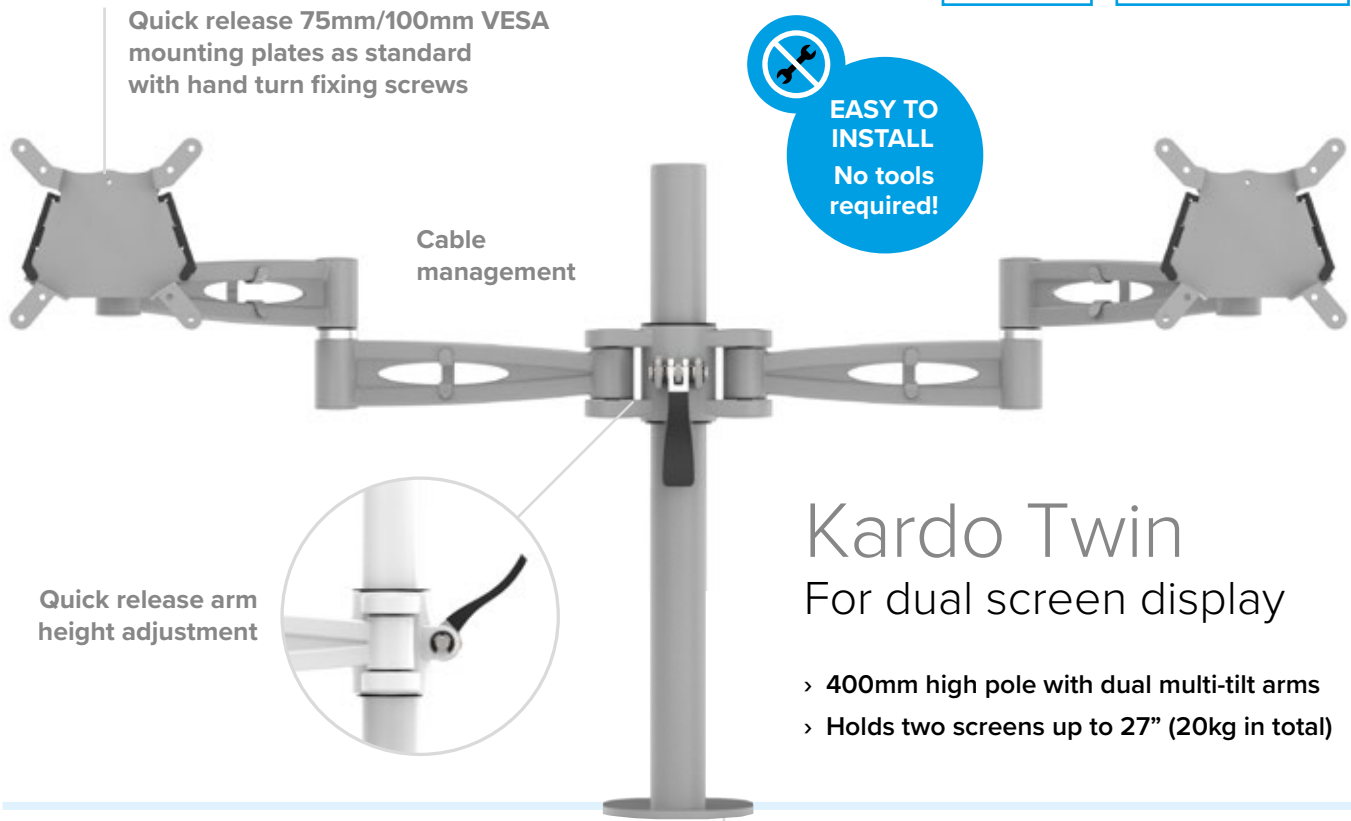


Convert to laptop holder with
universal VESA attachment

MONITOR ARM	MAX. CAPACITY	ARM FINISH
Gas lift monitor arm for single screen/monitor	10kg	Black
Twin rail to convert single arm to dual screens/monitors	2 x 4kg	White
Universal laptop holder attachment	10kg	Grey

Kardo

Pole-mounted monitor arms



Watch the video
metalicon.com/kardo

Kardo Twin For dual screen display

- › 400mm high pole with dual multi-tilt arms
- › Holds two screens up to 27" (20kg in total)



Certified to: BS EN ISO 9241 Workplace Ergonomics
PP 045 Safety and Durability

Includes pre-assembled clamp
plus through-desk fixing option



Integrated cable management
keeps your workspace clear



Single person install - quick release removable VESA mounting plates
slide effortlessly onto Kardo arm with fixing clips to hold screen in place



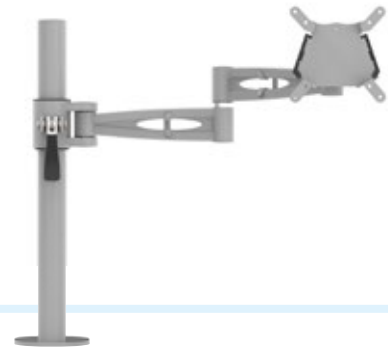
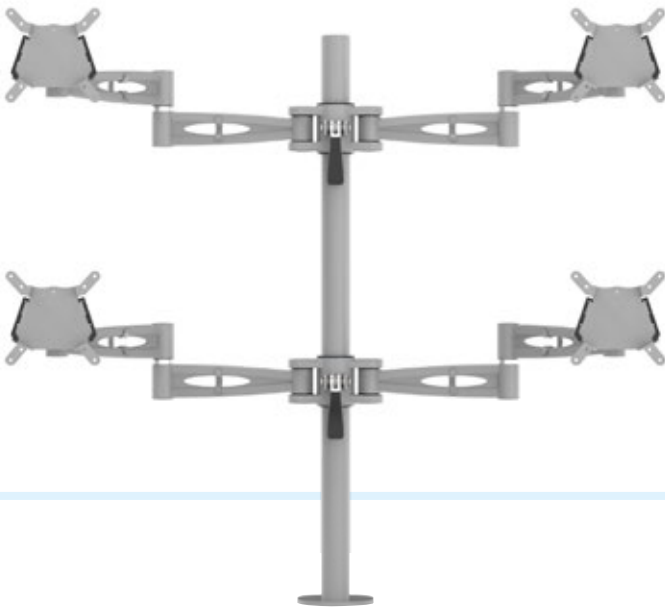
Hand-turn desk edge clamp and
through-desk fixing available



Brighten your workspace with an
integrated flower holder in the pole

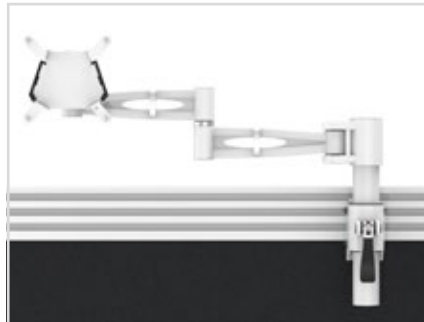
Kardo Single For single screen display

- › 400mm high pole with single multi-tilt arm
- › Holds one screen (up to 12.5kg)
- › Inverted single arm available to convert
existing single arm to twin/dual



Kardo Quad For four screen display

- › 700mm high pole with quad multi-tilt arms
- › Holds four screens up to 27" (32kg in total)



Tool rail mounted arm option
for single screen display



Quick release universal
laptop attachment option



Low profile mini clamp option
(requires hex/allen key)

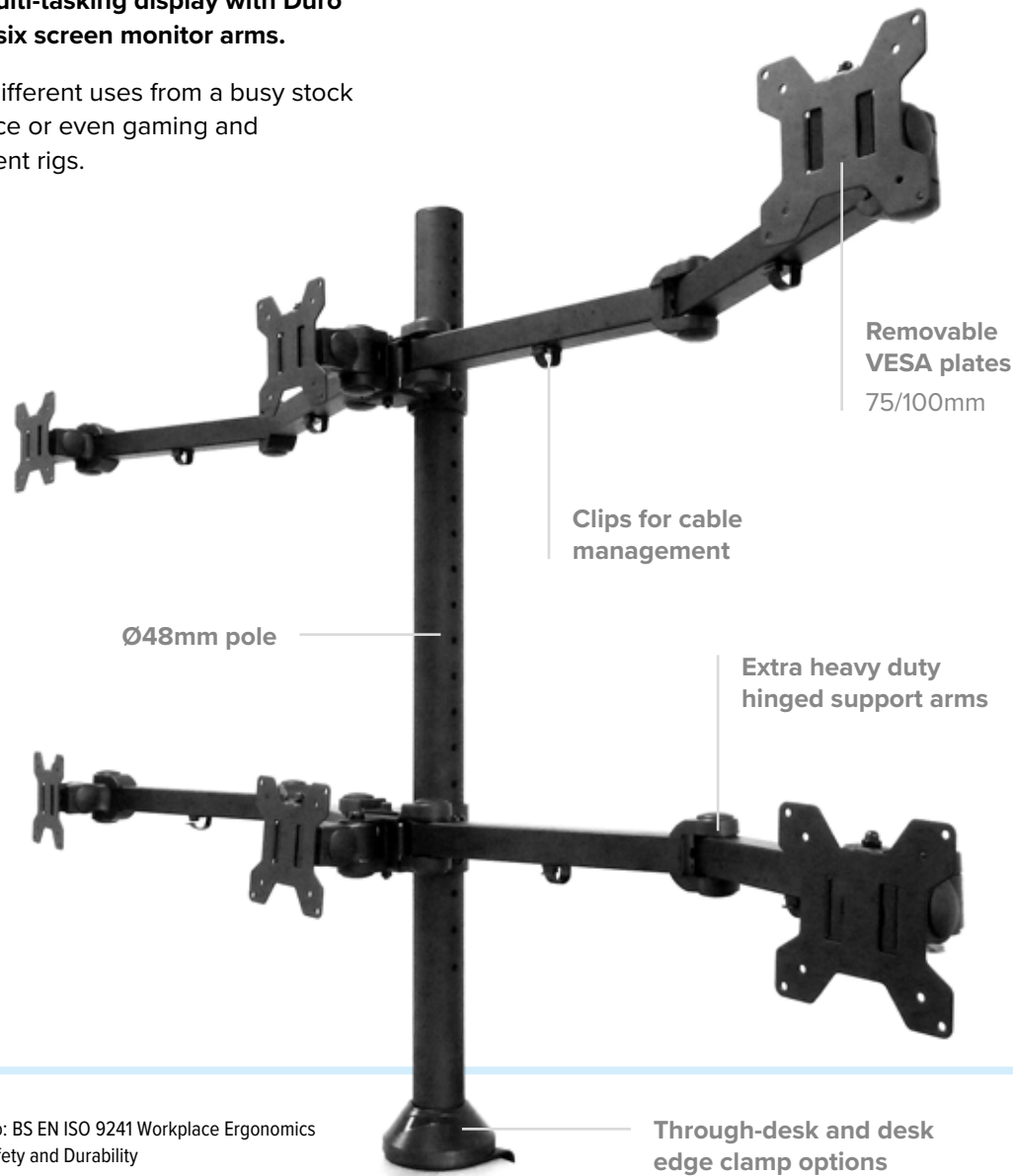
MONITOR ARMS	MAX. CAPACITY	FINISH
Pole-mounted monitor arm for single screen	12.5kg	Black
Pole-mounted monitor arm for twin screens	2 x 10kg	White
Pole-mounted monitor arm for four screens	4 x 8kg	Grey
Tool rail mounted monitor arm for single screen	6kg	
Inverted single arm only - to convert single to twin	12.5kg	
Universal laptop holder attachment	10kg	

Duro

Heavy duty monitor arms

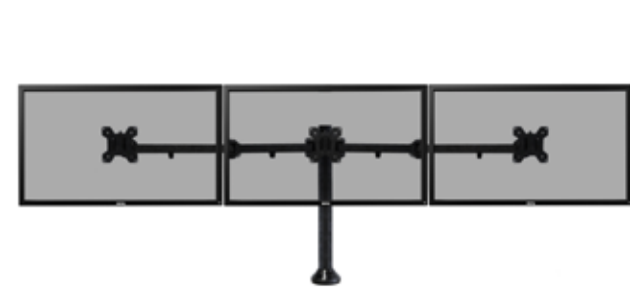
Create the ultimate multi-tasking display with Duro heavy duty three and six screen monitor arms.

Perfect for a range of different uses from a busy stock exchange to surveillance or even gaming and multimedia entertainment rigs.

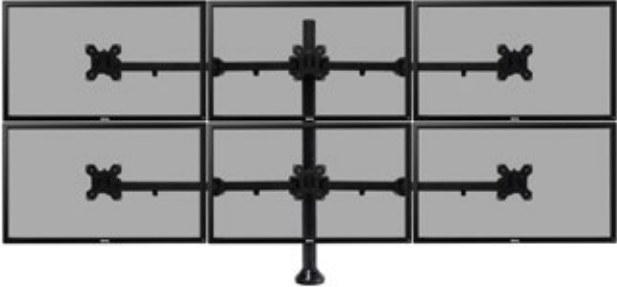


Supports up to six 10kg monitors up to 24" in screen size*

FIRA Certified to: BS EN ISO 9241 Workplace Ergonomics PP 045 Safety and Durability



Triple screen heavy duty monitor arm



Six screen heavy duty monitor arm

MONITOR ARMS	MAX. CAPACITY	FINISH
Triple screen heavy duty pole-mounted monitor arm	3 x 10kg	Black
Six screen heavy duty pole-mounted monitor arm	6 x 10kg	

* Maximum screen width 600mm



Visit our showroom

Get hands on with Metalicon® accessories

Try out all the products in this guide at our product showroom in Clerkenwell, London. We can host your customers too.

**47 Gee Street, Clerkenwell
London EC1V 3RS**

Contact our showroom manager Matt Fleck to arrange your visit: +44 (0)20 3620 5151

Check out our virtual tour:
arrowgroup.com/showroom



You'll also discover products from the Formetiq® furniture range including standing desks, task chairs, meeting chairs and mobile storage. Our ergonomic Metalicon® accessories have been designed to work seamlessly with and colour match to Formetiq® furniture.

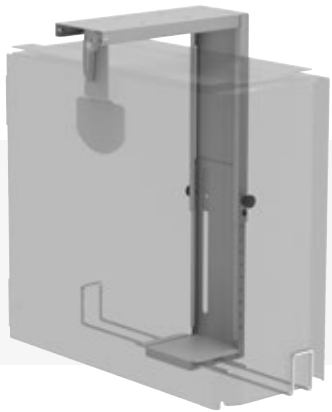
Arrow Group are partner distributors for Narbutas furniture and you'll see many of their ranges in our showroom including bench desks with acoustic screens, breakout meeting tables and soft seating.

CPU Holders

for most form factors

T1

- › Designed for mid tower CPUs, adjustable for other sizes
- › Spring-loaded pin to adjust height easily
- › Security bars prevent CPU falling from holder
- › Mount to desktop or side panel
- › Optional slide & turn kit and desk beam clearance kit



T3

- › Designed for mini or mid tower CPUs, adjustable for other sizes
- › Easy adjustment with straps and side release buckles
- › Includes desk beam clearance kit
- › Optional horizontal mounting kit
- › Available in black only



T2

- › Designed for mini tower or SFF CPUs, adjustable for other sizes
- › Spring-loaded pin to adjust height easily
- › Security bars prevent CPU falling from holder
- › Mount to desktop or side panel
- › Optional slide & turn kit and desk beam clearance kit



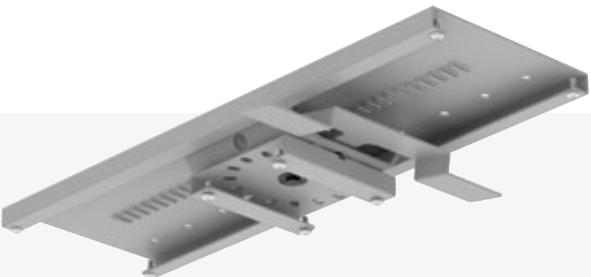
S1

- › Designed for mini CPUs or thin clients
- › Ideal for Apple Mac Mini®
- › Adjustable security strap with side release buckle
- › Mount to desktop, side panel, VESA or monitor arm pole
- › Compatible with Metalicon® Kardo and Levo monitor arms



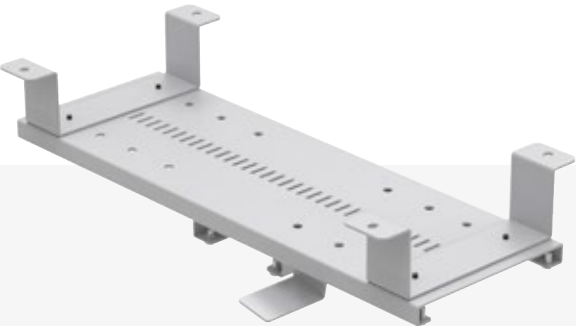
Slide & turn kit

- › Allows easy access and repositioning of CPU
- › Locks in position to prevent unwanted movement
- › Includes desk beam clearance kit (CHSP)
- › Compatible with T1 & T2 CPU holders

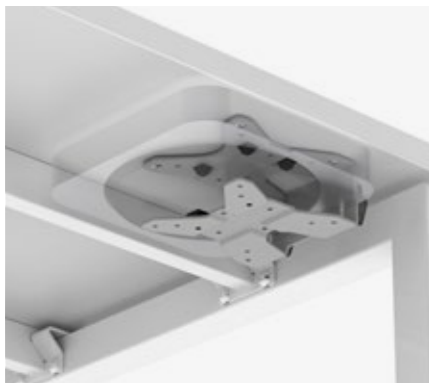


Desk beam clearance kit

- › Enables fixing to desktop around horizontal beams
- › Compatible with T1 & T2 CPU holders
- › Compatible with slide & turn kit



Mounted to Kardo pole



Mounted to underside of desktop



Mounted to Levo VESA



Certified to severe structural standards
Test Method PP 050: 2009 - Severe Use

CPU	FIXING / MOUNT	WIDTH CAPACITY	DEPTH CAPACITY	HEIGHT CAPACITY	FINISH
T1	Desktop / side panel	35 - 252	140 - 490	333 - 564	Black / White / Grey
T2	Desktop / side panel	35 - 110	140 - 300	213 - 360	Black / White / Grey
T3	Desktop	Max. strap circ. 1190	N/A	Min. 140	Black
S1	Desktop / side panel / VESA / pole	Max. strap circ. 700	25 - 63	N/A	Black / White / Grey

Boost

Desktop power + charge

Beautiful, stylish and incredibly compact, Boost desktop modules provide power exactly where you need it while using minimal space on your desk.

Boost is designed to appear subtle and unobtrusive at the rear of the desktop, available in white or black.



Watch the video
metalicon.com/boost

Easy-install low profile desk clamps included
Easily secure the Boost module to the desktop with no tools required

5 YEAR
GUARANTEE

Individually fused
power sockets

Neon master switch
Type G (UK) modules

Type G (UK or
E (French)
sockets



USB-A and USB-C
smart charge

RJ45 (Cat6)
data transfer

Extremely high quality construction
with aluminium casing



POWER	USB-A	USB-C	RJ45 DATA
1 x Type G + master switch	1	1	
2 x Type G + master switch			
2 x Type G + master switch	1	1	
2 x Type E	1	1	
2 x Type G + master switch			2
2 x Type G + master switch	1	1	2
2 x Type E	1	1	2
4 x Type G + master switch	1	1	
FINISH			
Black			
White			



Fully tested and certified to BS 5733 & BS 1363-2, CE marked
Meets BS 6396 requirements

Powerlink

Under-desk power

These simple but robust power modules can be installed in cable trays or fixed to the underside of the desktop using the brackets or hook and loop pads provided.

With high quality aluminium alloy casing, solid construction and sleek appearance, Powerlink offers incredible value for money.

Powerlink modules can be linked to other under-desk or desktop power modules, including Boost and Solo Plus, using connector cables with a maximum of six power sockets in one series. Powerlink comes with a champagne alloy case and black plastic insert.



Type G (UK) or
E (French)
sockets

Easy to connect with
Boost desktop modules

Mains to GST 3-pole
female power cables
and GST 3-pole male to
female connector cables
are available in various
lengths (1-10m)



5 YEAR
GUARANTEE



Powerlink comes with
optional metal brackets
and hook & loop fixings
for fixing to desktop

POWER	FINISH
2 x Type G	Alloy case with black insert
2 x Type G + master switch	
2 x Type E	
3 x Type G	
3 x Type E	
4 x Type G	
4 x Type G + master switch	
4 x Type E	
6 x Type G	
6 x Type E	



Ideal for cable trays

Fully tested and certified to BS 5733 & BS 1363-2, CE marked
Meets BS 6396 requirements

Click

Hidden in-surface power + data

Ideal for meeting tables the Click module takes the convenience of the Boost desktop module and hides it in the surface. Simply press the lid to open and reveal power sockets, charging ports and data transfer below.

Click includes USB-A + USB-C smart charge plus HDMI and RJ45 data transfer. The split sprung lid allows cables to pass through whilst keeping all the mess covered.

USB-A + USB-C smart charge
RJ45 & HDMI data transfer ports

Requires 275 x 164 mm cut-out in surface

Individually fused UK power sockets

Integrated GST 3-pole female connector

Fully tested and certified to BS 5733 & BS 1363-2, CE & UKCA marked
Meets BS 6396 requirements

FINISH		GST 3-POLE POWER CABLE		
Black		1.10m		
White				

POWER	USB-A	USB-C	RJ45 DATA	HDMI
2 x Type G	1	1	1	1

Solo

Smart Charge power + charge

Simple. Convenient. Incredible value.

With a single power socket, USB-A Smart Charge socket and 2.5m hardwired mains power cable, Solo fits conveniently in a standard Ø80mm port hole and provides the perfect accessory to your desk.

USB Smart Charge port

For Ø80mm port holes
Fits Ø60mm hole without surround

Easy to install with screw on collar
No tools required

2.5m hardwired mains power cable

Fully tested and certified to BS 5733 & BS 1363-2, CE marked
Plug tested to BS 1363-1, meets BS 6396 requirements

FINISH		POWER	USB-A
Black		1 x Type G	1
White		1 x Type E	1

Solo Plus

Customisable power + charge

Solo Plus offers the same compact simplicity of Solo with a single UK power socket and 18W USB-A smart charge socket plus the addition of 2 x 45W USB-C smart charge sockets - all in one Ø80mm module!

Choose from HDMI or Cat6 RJ45 data transfer inserts for both sides of the module or alternatively leave them blank or empty for use as cable pass-throughs.

18W USB-A and 45W USB-C charge

2 optional data transfer inserts
HDMI or RJ45, blank or empty for cable pass-through

Type G (UK) or E (French) sockets

Secure in place with clamp-on collar or tabs

5 YEAR GUARANTEE

FINISH		GST 3-POLE POWER CABLE		
Black		1.10m		
White				

Fully tested and certified to BS 5733 & BS 1363-2, CE & UKCA marked
Meets BS 6396 requirements

POWER	USB-A	USB-C	RJ45 DATA	HDMI
1 x Type G or E	1	1	2	
1 x Type G or E	1	1		2
1 x Type G or E	1	1	1	1
1 x Type G or E	1	1	1	
1 x Type G or E	1	1		1



Watch the video
metalicon.com/solo-plus

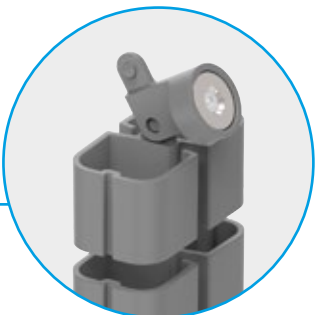
Linx

Magnetic cable management spine

Designed with strength, flexibility and ease of installation in mind, Linx offers the latest developments in superior cable management.

The unique ‘twist not pull’ linking system ensures the vertebrae will never pull apart under tension, but will detach very easily when twisted sideways. This ensures that Linx never comes apart while in use, but remains incredibly easy to extend and manipulate when needed.

The new Linx Limpet makes installation quick and easy, fixing the spine to cable trays or desk frame with a magnet. The spine can be easily relocated if required.



Limpet magnetic fixing
Mount Linx anywhere on cable tray or desk frame



Alternative multipurpose fixing clamp
Mount to cable tray, wire basket or desktop

Unique linking system
Click-together vertebrae make Linx incredibly easy to shorten or lengthen and insert power and data cables

Dual cable compartments
Segregated power and data cables (30mm x 25mm)

Large stable base
Weighted base with dual cable exits



SPINE	LENGTH
20 vertebrae + weighted base	800
33 vertebrae + weighted base	1300
33 vertebrae, no base (for tray to tray use)	1280

FINISH
Black
White
Grey



Watch the video
metalicon.com/linx



Cable Trays

and baskets

Untidy power and data cables are unsightly, make cleaning difficult and can pose a safety risk. Use of a cable tray or basket underneath the desk helps to keep cables neat and tidy and the workspace clear.

Our range of simple but strong steel cable trays and baskets is designed to suit various desk sizes and arrangements.

TRAY FINISH
Black
White
Silver
Anthracite

Desktop fix

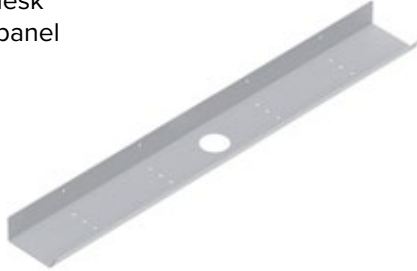
Fixed to underside of desktop



WIDTH	DEPTH	HEIGHT	DESK WIDTH
850	100	125	1200
1050	100	125	1400
1250	100	125	1600
1450	100	125	1800

Modesty panel fix

Fixed to desk modesty panel



WIDTH	DEPTH	HEIGHT	DESK WIDTH
850	100	50	1200
1050	100	50	1400
1250	100	50	1600
1450	100	50	1800

Shared / bench desking

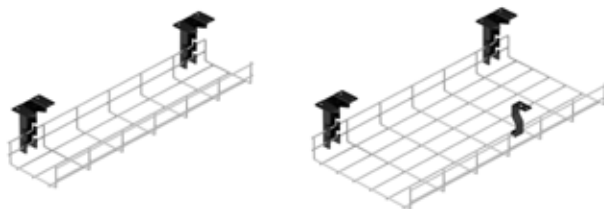
Fixed to underside of desktops



WIDTH	DEPTH	HEIGHT	DESK WIDTH
1100	110	130	1200 / 1400
1400	110	130	1600 / 1800
1100	430	130	1200 / 1400
1400	430	130	1600 / 1800

Cable baskets

Galvanised steel finish only



WIDTH	DEPTH	HEIGHT	DESK WIDTH
600	150	50	800 / 1000
1000	150	50	1200 / 1400
1400	150	50	1600 / 1800
600	300	50	800 / 1000
1000	300	50	1200 / 1400
1400	300	50	1600 / 1800



Ocean Friendly Packaging[®]

Looking after our planet for future generations

Waste plastic is creating a global pollution problem, especially in our oceans. Nobody knows exactly how much, but recent estimates from respected scientific journals indicate some 8 million tonnes of plastic enter our oceans every year!

Since 2018 we have been focused on eliminating plastic from our product packaging. The majority of our product packaging is already made using recycled paper-based materials which can also be recycled again and our aim is to have all Metalicon[®] branded packaging completely plastic free by 2025.



Look out for our Ocean Friendly logo on Metalicon[®] product packaging. This indicates the packaging for this product is already completely plastic free! Thank you for supporting us in tackling this important issue.



Compass House, Waveney Drive, Lowestoft, NR33 0TP
+44 (0)1502 533 433 | sales@arrowgroup.com
arrowgroup.com

Certified for ISO 9001 Quality Management Systems
and ISO 14001 Environmental Management